

## 2023-2024 ANNUAL IMPACT REPORT

# Embracing a Future Full of Promise for 60 Years



# TABLE OF CONTENTS

02	Our Mission, Equity Statement, & Promise
03	Executive Director Message
04	Retirement Farewell Message
05	Board of Directors
06	Staff
07	Contributors
09	Fiscal Year Highlights & Photos
11	Financial Position & Activities
13	Head Start & Early Head Start Budget
14	Head Start
17	Family Advocacy
18	Child Nutrition
19	Home Energy
22	Community Services
24	Employment
25	Transportation
27	Senior Support
28	Congregate Meals
29	Office Locations

# 2023-2024

## OUR MISSION

Central Kentucky Community Action Council, Inc. provides services to meet basic needs and to empower vulnerable populations. By increasing self-sufficiency and developing strategies to promote economic independence through partnerships and community resources.

## OUR EQUITY STATEMENT

As Central Kentucky Community Action Council, Inc. aims to effectively eradicate the causes and conditions of poverty, we understand that racial inequity rests at the intersection of multiple barriers that impede access to economic security for children, families, and communities.

## OUR PROMISE

Central Kentucky Community Action Council changes people's lives, embodies the spirit of hope, improves communities and makes America a better place to live. We care about the entire community, and we are dedicated to helping people help themselves and each other.

# EXECUTIVE DIRECTOR MESSAGE

Dear Friends and Partners,

This year, we have something truly special to commemorate: In 2024, Community Action became 60 years strong!

Sixty years ago, in 1964, productive, hardy, adaptable seeds were sown when President Johnson signed the Civil Rights Act on July 2, and the Economic Opportunity Act on August 20. These pivotal pieces of legislation laid the foundation for the War on Poverty and became deeply intertwined with the civil rights movement, impacting communities from the federal level down to the grassroots. That year, local coalitions across the nation began using Economic Opportunity Act funding to establish Community Action Agencies (CAAs). By November 1964, the first grants were announced, and by 1966, in true Community Action spirit, 1,600 new CAAs had been established, serving people in urban, suburban, rural, and frontier communities across America.

Those of us working or volunteering in Community Action are part of a long and valuable legacy. For 60 years, Community Action has inspired a spirit of hope and helped millions of individuals and families connect to resources that empower them to succeed, making our communities—and our nation—stronger. From the very beginning, Community Action’s mission has extended well beyond supporting individuals and families; it has been about bringing people and resources together in innovative ways to create community-wide solutions to persistent challenges.

Today, Community Action continues to thrive in every corner of America. We connect over 9.5 million people, including 3.1 million children under the age of 17 and 2.1 million adults over the age of 55, with services and support that improve their lives. We co-design services and strategies with individuals who have experienced poverty, and we coordinate innovative solutions to achieve greater impact while sharing our expertise with national, state, and local leaders.

Central Kentucky Community Action Council has evolved as the conditions and causes of poverty have changed. However, the vision established in 1964 remains clear: We believe in a nation that creates opportunities for all people to thrive, build strong, resilient communities, and ensures a more equitable society.

Thank you for your continued support and dedication to our shared mission. Together, we will keep the spirit of Community Action alive for many years to come.

Sincerely,

Hal B. Goode  
Executive Director  
Central Kentucky Community Action Council



Hal Goode and CKCAC Board Chair Andrew Akins



# RETIREMENT FAREWELL MESSAGE

Dear Friends and Partners,

As I prepare to step down from my role as Executive Director of Central Kentucky Community Action Council, I am filled with a deep sense of gratitude and reflection. The journey we've shared over the years has been both challenging and rewarding, and I am proud of the work we've accomplished together.

Throughout my tenure, my passion has always been to empower our community members, especially those in need, by creating programs that lift them out of poverty. Our initiatives have aimed to provide not just immediate relief but also sustainable pathways to better futures. Protecting the most vulnerable among us—our children and senior citizens—has been a core part of our mission, and I am heartened by the impact we've made in these areas.

I have been privileged to work alongside an incredible team whose dedication and hard work have been the cornerstone of our success. The love and respect I have for my staff and colleagues cannot be overstated. Your commitment to our cause and the compassion you show to those we serve inspire me every day. Together, we have built a community that truly cares, and I am confident that this spirit will continue to thrive.

As I retire, I leave knowing that Central Kentucky Community Action Council is in capable hands. Bryan Conover will do a fantastic job leading our team starting January 1, 2025. Our vision and mission will continue to be driven forward with the same fervor and dedication. I look forward to seeing the great strides that will be made in the years to come.

Thank you all for your support, friendship, and shared commitment to our community. It has been an honor to serve as your Executive Director. Beginning on January 1, 2025 I can be reached via email at [halb@gngc.org](mailto:halb@gngc.org) or via cell phone at 859-481-2600.

More to come.....much more.....

With warmest regards,

*Hal B. Goode*

Hal B. Goode  
Executive Director (Retiring)  
Central Kentucky Community Action Council



# BOARD OF DIRECTORS

## PUBLIC SECTOR DIRECTORS

Judge Maurice Lucas, Breckinridge County

Judge Kevin Henderson, Grayson County

Judge Keith Taul, Hardin County

Judge Blake Durrett, LaRue County—Vice Chairman

Judge David Daugherty, Marion County

Judge Troy Kok, Meade County

Judge Tim Hutchins, Nelson County

Judge Tim Graves, Washington County

## PRIVATE SECTOR DIRECTORS

Mr. Andrew Adkins, Breckinridge County—Board Chairman

Mr. Eddie Clemons, Grayson County

Ms. Nancy Addington, Hardin County—Secretary

Ms. Vonda Gray, LaRue County

Mr. John G. Mattingly, Marion County—Treasurer

Mr. Todd Blackburn, Meade County

Ms. Angie Chandler, Nelson County

Ms. Christy Carpenter, Washington County

## LOW INCOME REPRESENTATIVES

Ms. Diane Weaver, Breckinridge County

Ms. Michele Vincent, Grayson County

Ms. Brenda Thompson, Hardin County

Open Position, LaRue County

Ms. Jennifer Osborne, Marion County

Ms. Robin Brown, Meade County

Ms. Shelly Lambert, Nelson County

Mr. Roland Youmans, Washington County

## HEAD START POLICY COUNCIL REPRESENTATIVE

Ms. Kathy Carey, Washington County

## EMERITUS

Mr. Thomas Mahoney, Hardin County

Mr. Joseph Stewart, Marion County Attorney at Hand

**A Special Thanks to  
Our Board of Directors  
Who Donate Their Time,  
Contribute Their  
Knowledge and Provide  
Ongoing Support to Our  
Mission for the past 60  
Years.**



# PROGRAM DIRECTORS & INDIRECT STAFF



**Mr. Hal B. Goode**  
Executive Director



**Ms. Jami Sandusky**  
Assistant Executive  
Director & CFO



**Ms. Mary Jane Tungate**  
Human Resources Manager



**Ms. Shelbi McWhorter**  
Human Resources  
Assistant



**Ms. Kathy Mills**  
Administrative Assistant



**Ms. Gretta Allen**  
A/P Supervisor &  
Head Start Specialist



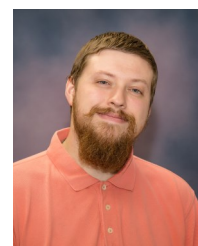
**Ms. Laney Hall**  
Payroll Coordinator &  
Tax Specialist



**Ms. Larae Miles**  
Finance Assistant



**Ms. Chloe Dawson**  
Accounts Receivable/  
Accounts Payable Clerk



**Mr. Jacob Barlow**  
IT Assistant



**Ms. Mary Jean Blake**  
AmeriCorps Director



**Ms. Ellen Leake**  
Community Services Block  
Grant Director & Agency  
Operations Officer



**Ms. Ronda Bertrand**  
Community Collaboration  
for Children Director



**Ms. Melissa Brown**  
Congregate Meals  
Director



**Mr. Thomas Wheatley**  
Kentucky Works Director



**Ms. Kathy Hagan**  
Family Child Care Homes/  
Unaffiliated Centers Director



**Ms. Kerri Taylor**  
Community Action  
Transportation Services Director



**Mr. David Lindsey**  
Weatherization Director



**Ms. Jessica Miles**  
CISO



**Mr. Bryan Conover**  
Head Start Director



# 2023-2024 CONTRIBUTORS

Your Generous Donations Have Helped Community Action for 60 Years

Abbey of Gethsemani

Abound Credit Union

American Online Giving Foundation

American Legion Post 42

American Legion-Nelson County Riders

Anonymous Donor

Behnke Restaurants Elizabethtown LLC

Blue Oval

BRE II LLC

Breckinridge County Fiscal Court

City of Lebanon

City of Springfield

Communicare Inc.

Community Services, Inc.

Kathy Coomer

Curtis Maruyasu America Inc.

Dollar General Store-Lebanon

Bobby Gardner

Glasscock Elementary School

Kenneth Goff

Hardin County Fiscal Court

Lisa Haydon

Haydon Materials

Hendrickson

Kentucky Cooperage Company LP

Knights of Columbus-Marion County

Kroger-Lebanon

LaRue County Fiscal Court

Ellen Leake

Magnolia Bank

Louisville Urban League

Marion County Fiscal Court

Marion County Middle School

Menasha Corporation

Mid America Assistance Coalition

Mill Creek Baptist Church

Sommer Moore

Muldraugh Hill Baptist Church

Nelson Christian Church

Nelson County Fiscal Court

Open Arms of Hardin County

Optimist Club

Outdoor Power Source

PNC Bank

Public Entity Insurance

St. Augustine Catholic Church

St. Dominic Church

St. Monica Church

St. Vincent De Paul Church

St. Vincent De Paul Conference of St. Dominic

St. Vincent De Paul Outreach

Salem Baptist Church of Brandenburg



Richard Sweazy

Dr. Brian & Lorraine Scott

Sisters of Charity of Nazareth

Spring View Hospital

Springfield Presbyterian Church

Stewart's Creek Baptist Church

Toyota Bashoky Kentucky

Tri-County United Way

Harry VanWhy III

Walmart-Lebanon

Jimmy Wethington

Wilson & Muir Bank & Trust Company

Woodlawn Baptist Church

Embracing a  
Future Full of  
Promise for  
60 Years





# HIGHLIGHTS FOR 2023-24

**1,228 Medicare Trips**

**64,032 Medicaid Trips**

**195 Unemployed Adults Obtained/Retained Employment for at least 90 Days**

**385 Veteran CKCATS Trips**

**92,013 Congregate Meals Served 1,295 Meals to Clients**

**158 Children Received Beds through CCC's Build-A-Bed Program**

**18,696 Food Boxes were Distributed**

**6,248 Unduplicated Households Served**

**16 Jobs were Completed for Weatherization Services**

**96,172 CKCATS TRIPS were Made Covering 1,577,241 Miles**

**2,559 Kentucky Works Referrals for the SNAP Program**

**26,743 Hours of Service Donated by RSVP Volunteers**

**470 Head Start Students Enrolled**

**24 Early Head Start Students Enrolled**

**23,000 Senior Companion Program Volunteer Hours of Service**

**333 Children Participated in our Backpack Snack Program**

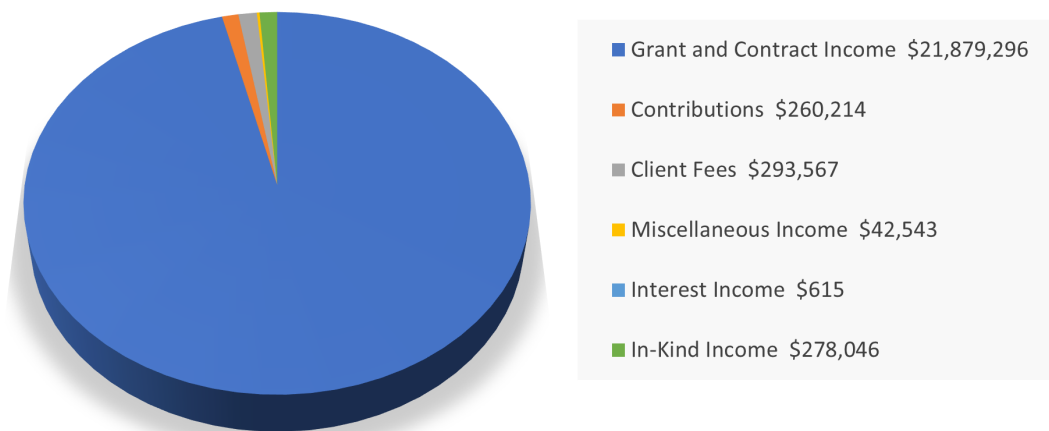


# HIGHLIGHTS FOR 2023-24



# FINANCIAL POSITION & ACTIVITIES FOR FISCAL YEAR ENDING JUNE 30, 2024

## Total Revenues, Gains and Other Support



## ASSETS

### Current Assets

Cash—Restricted (Note B & L)	\$ 6,842,015
Grants Receivable (Note C)	\$ 1,885,509
Other Receivables	\$ 305,389
Other Current Assets	\$ 76,958
<b>Total Current Assets</b>	<b>\$ 9,109,871</b>
Land	\$ 770,145
Property and Equipment (Notes A-2 & D)	\$ 17,688,874
Construction in Progress (Note D)	\$ 933,433
Accumulated Depreciation	\$ (5,966,632)
Right-of-Use Asset Net of Accumulated Amortization	\$ 322,346
<b>Total Net Land, Property, and Equipment</b>	<b>\$ 13,748,166</b>
<b>Total Assets</b>	<b>\$ 22,858,037</b>



## LIABILITIES & NET ASSETS

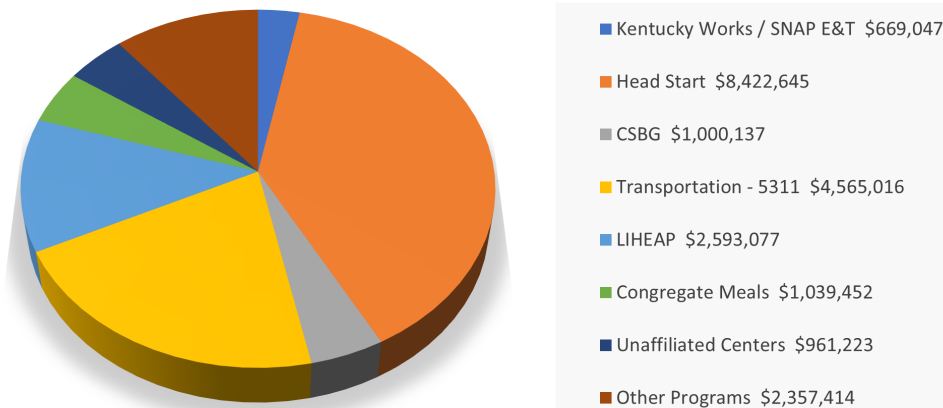
### Current Liabilities

Accounts Payable	\$ 691,692
Accrued Salaries & Wages	\$ 612,330
Accrued Retirement	\$ 120,639
Current Portion of Financing Lease Obligation (Note I)	\$ 32,087
Operating Leases Payable (Note J)	\$ 200,062
Other Liabilities	\$ 204,264
Refundable Advances (Note A-5)	\$ 6,523,922
<b>Total Current Liabilities</b>	<b>\$ 8,384,996</b>
Operating Lease Payable	\$ 122,284
Financing Lease Obligation (Note I)	\$ 98,907
<b>Total Long-Term Liabilities</b>	<b>\$ 221,191</b>
<b>Total Liabilities</b>	<b>\$ 8,606,187</b>

### Net Assets

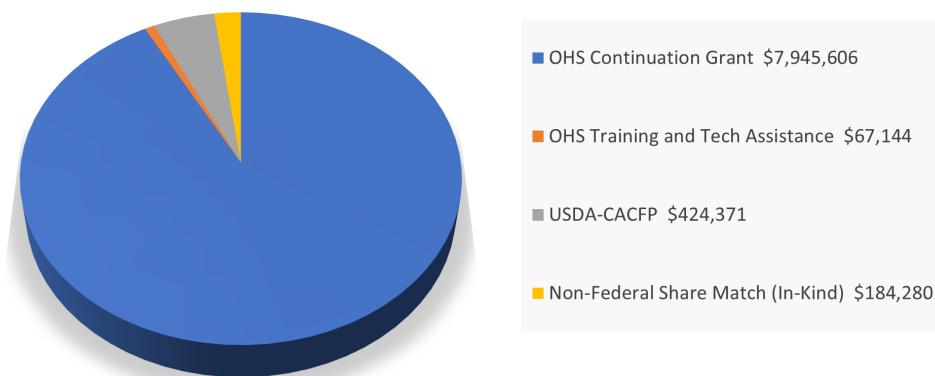
Without Donor Restrictions	\$ 3,281,052
With Donor Restrictions	\$ 10,970,798
<b>Total Net Assets</b>	<b>\$ 14,251,850</b>
<b>Total Liabilities &amp; Net Assets</b>	<b>\$ 22,858,037</b>

## Total Expenses By Program Services

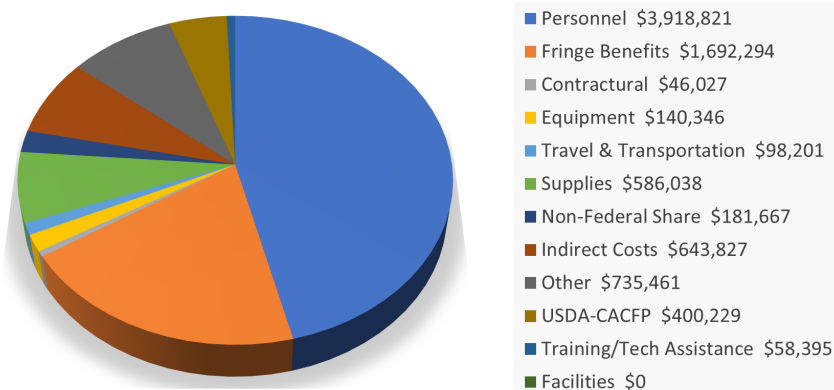


# HEAD START & EARLY HEAD START BUDGET

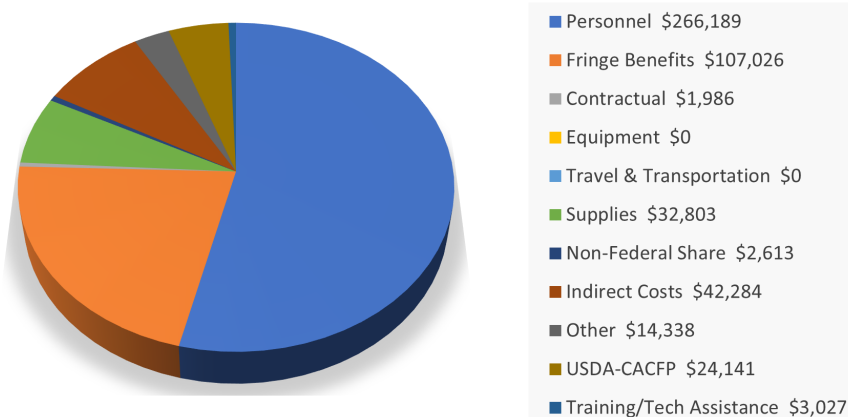
## 2023 FUNDING BUDGET \$8,687,945



## 2023 Head Start Expenses \$8,101,077



## 2023 Early Head Start Expenses \$470,266





# HEAD START YEAR OF THE WHY



2023-24 has been another exciting and successful year for Central Kentucky Head Start. Our theme for this school year has been “Year of the Why”. Staff have been encouraged to find their own “Why”, but also to analyze why we do the things we do. This year has given us all the chance to evaluate best practices and make strides in streamlining our service delivery while also strengthening it.

As we reflect on the 60<sup>th</sup> anniversary of Community Action, it is a perfect opportunity to think about what the next 60 years will look like. Central Kentucky Head Start (CKYHS) has invested in multiple facilities, including purchasing and renovating a property for our Bardstown Head Start this year. These investments will pay dividends for decades to come for Head Start children, families, and staff. We also must continue to make recruiting and retaining high-quality staff our top priority. Everything we do as a Head Start program relies on talented and committed staff members to support our vulnerable children and families. 60 years of Community Action is an amazing milestone. However, for us to exist in 60 years, we must continue to invest in our people. Central Kentucky Head Start consistently looks to do so with increased wages, retention stipends, and refining positions and structures for the future.

Staff wellness and mental health continues to be a priority. Central Kentucky Head Start has invested in The Beans, which is a partner with National Head Start Association (NHSA) to provide financial planning support to all staff. All CKYHS staff and their families also have access to Starling Minds, which is an online mental health resource funded by NHSA. All CKYHS staff have been encouraged to take advantage of these incredible opportunities to help improve staff mental health, reduce stress, and prevent burnout. We want our team to be as physically and mentally healthy as we can be to provide the best possible experience for our children and families.

Central Kentucky Head Start’s mission is to deliver the highest quality preschool education experience for children and families while engaging partnerships and community resources. We seek to fulfill this mission daily and have re-dedicated ourselves to this mission this past year. We strive to teach our children, lead our families, and serve our communities in all we do. Please visit our website [www.CKYHS.org](http://www.CKYHS.org) for more information.



## Providing the Highest Quality Preschool Education

Preparing children to enter Kindergarten (School Readiness) is the mission of Central Kentucky Head Start. We implement the Frog Street Press curricula for Head Start and Early Head Start classrooms. Central Kentucky Head Start also implements Conscious Discipline and Second Steps to help children learn how to be members of a classroom environment. All our curricula are research-based and developmentally appropriate.

All our children are assessed multiple times through the Desired Results Development Profile (DRDP). We also evaluate every classroom multiple times a year with the Classroom Assessment Scoring System (CLASS) to ensure that interactions between children and teaching staff are developmental and scaffolded.

In the past year, dozens of staff members completed the Child Development Associate (CDA) credential or have enrolled in college courses for Early Childhood Education. These efforts highlight that Central Kentucky Head Start is committed to providing the highest quality preschool experience to our children and families.



## Recognizing Parents and Families as Essential

What separates Head Start from other preschool and childcare options? It is our commitment to engaging the whole family in helping children reach their full potential. Central Kentucky Head Start has Family Advocates (FAs) at each center who work with individual families to do goal setting as parents and people. FAs share assessment data from the classroom with families and help ensure that all children are healthy and safe.

Our programming for parents and families includes Parent Meetings, Parent University, Nights at the Museum, Literacy Nights, Field Day, and more. In the past year, Central Kentucky Head Start hosted at least 130 events at our centers for families. We also have family representatives from each center as members of our Policy Council. Our parents and families are essential to the shared governance of Central Kentucky Head Start.

Lastly, Central Kentucky Head Start consistently looks for ways to improve communication with our parents and families. Over the past year, we have fully implemented ParentPowered, which is a text-based resource and announcement platform. A few times per week, families receive text messages with parenting resources or announcements from their respective centers. Also, all classrooms are now set up on the Brightwheel communication platform that allows staff to communicate with families in real-time about children's successes and experiences. Communication is key to relationship-building and all CKYHS staff invest heavily in it.

# 2023-2024

	HEAD START	EARLY HEAD START
TOTAL FUNDED ENROLLMENT	470	24
TOTAL NUMBER OF CHILDREN SERVED	538	40
TOTAL NUMBER OF FAMILIES SERVED	490	37
AVERAGE MONTHLY ENROLLMENT	470	24
PERCENTAGE OF ELIGIBLE CHILDREN SERVED	93%	98%
NUMBER OF CHILDREN RECEIVING DENTAL EXAMS	281	28
NUMBER OF CHILDREN RECEIVING MEDICAL EXAMS	370	18



# FAMILY ADVOCACY

## Community Collaboration for Children In-Home Program

Community Collaboration for Children (CCC) In-Home focuses on the needs of children and families. Our mission is to educate, empower, and connect families to local resources and supports while promoting a nurturing, stable, and safe home environment. Services are developed that teach problem-solving skills, discuss appropriate discipline skills, assists parents in becoming more self-sufficient, and coordinating available resources. Families complete the Nurturing Parenting curriculum within the 12-week program.

## Parent Engagement Meetings

Parent Engagement Meetings (PEMS) target elementary school-aged children to define barriers to attendance, identify strengths and needs, develop a plan of action, and strive to prevent the family from being unnecessarily involved in the child welfare system. It is our intent that this diversion program act as a preventative intervention to reduce referrals to Child Protection Services (CPS) for educational neglect. This service is intended for children who are considered chronically truant (three or more unexcused absences). The PEMS are currently being offered at Washington County Elementary and Elizabethtown Independent School District.

## Trail of Hope Regional Network

The Regional Network is comprised of community partners from all areas of the Lincoln Trail region who come together to build awareness and educate communities regarding child abuse and neglect. Additional goals include collaborating within communities, strengthening and supporting families, building parent leadership, and promoting responsible fatherhood.

## Community Collaboration for Children Partnerships

The CCC Program partners with other groups/agencies to advocate for children and families, including:

**Cakes4Kids**—Cakes4Kids is powered by a group of volunteers who donate all the ingredients and supplies to bake cakes for the youth in their own homes and then deliver them to our partner agencies who support the youth. We delivered 18 cakes to children for fiscal year ending June 2024.

**Build-A-Bed Program**—The Trail of Hope Regional Network's Build-A-Bed program was extremely busy delivering 158 beds to families. A big thanks to Mill Creek Baptist Church, Tri-County United Way, Marion County Fiscal Court, Nelson County American Legion Post 42, Blue Oval and Toyota Boshoku for donations to the Build-A-Bed program.

## CCC Success Story:

Our In-Home CCC program had a family of 6 residing in a hotel. The family needed assistance with housing, transportation for the children going to school as well as different parenting techniques. After ending In-Home Services, the family is now in housing, the children can get picked up and dropped off by the bus every morning and afternoon, the youngest child is potentially going to attend Head Start next school year and the parents are now utilizing more positive parenting techniques.



# CHILD NUTRITION

Central Kentucky Community Action Council (CKCAC) is a proud sponsor of the USDA's Child and Adult Care Food Program (CACFP). The CACFP is a federal program designed to promote the serving of nutritious meals and snacks to children and adults in the care of participating childcare centers, day care homes and adult day care centers. CKCAC currently sponsors 24 Family Child Care Homes (FCCH), 24 Unaffiliated Day Care Centers (UC) and 1 Emergency Shelter in the following 18 Kentucky counties: Anderson, Boyle, Casey, Fayette, Franklin, Hardin, Jessamine, LaRue, Lincoln, Meade, Mercer, Nelson, Pulaski, Scott, Taylor, Washington, Wayne, and Woodford.

The CACFP benefits the children, the child care facilities, the parents/guardians of the children and our communities. Below are some of the many benefits the food program provides.

## **CACFP Benefits for Children Include:**

- Served three meals a day that are USDA certified: usually breakfast, lunch and afternoon snack.
- Served cow's milk or nutritional equivalent twice a day.
- Served fruits and vegetables daily; often fresh which they may not receive otherwise.
- At least one of the grains served each day is a whole grain.
- Some FCCH and Centers have small gardens and get the children involved with the gardening process and the rewards of fresh fruit and/or vegetables. The more the children are involved in the growing, gathering and/or preparing of meals, the more likely they are to try new foods.
- CACFP requires sugar limits on cereal, etc. that is provided as CACFP components. (Sugar/Serving Size=0.212 or less)
- CACFP helps children receive needed nutrients that they may not otherwise receive, while helping them create healthy eating habits they can continue into adulthood or at least revisit as adults.



## **Sponsored Home and Center Benefits Include:**

- Can advertise as a CACFP participant which lets parents/guardians know their children will receive USDA certified menus while in their care.
- Receives food costs reimbursement based on the number of meals served and the Free, Reduced and Paid eligibility of the children in their care, which helps with rising grocery costs.
- Sponsor provides staff training each year; checks the monthly reports for accuracy and makes necessary changes before submitting reimbursement information to the state; and bears the weight of any issues like requested refunds by the state.

## **Parent/Guardian Benefits Include:**

- Child is receiving a well-rounded diet which promotes a healthy child physically and emotionally, often resulting in a happier child and less medical costs.
- Childcare receiving CACFP reimbursements are less likely to have to raise their rates due to the rising cost of food.
- Children exposed to more types of foods may be more willing to try additional food options the parent/guardian provides, resulting in a less picky eater.

## **Community Benefits Include:**

- CACFP makes child care in our communities more affordable due to the food costs reimbursements received by Family Child Care Homes and Centers participating in the program.
- CACFP promotes healthy eating habits for community youth which ultimately results in a healthier community.
- CACFP encourages needed child care homes and centers to open in our communities because it's more affordable due to the food costs reimbursements, which in turn enables more parents/guardians to enter the local workforce.

If you know of any Family Child Care Homes and/or Day Care Centers who are interested in finding out more about the Child and Adult Care Food Program and whether they are eligible to participate, they may contact CKCAC's FCCH/UC Director Kathy Hagan at 270-692-2136 X501 or by email at [kathy.hagan@ckcac.org](mailto:kathy.hagan@ckcac.org).



# Home Energy

## Weatherization at Work for the Clients We Serve

Central KY Community Action Council (CKCAC) Weatherization Assistance Program (WAP) was created in 1976 known as winterization. Measures installed were at the lowest cost possible due to the use of volunteer labor, measures consisted of covering windows with plastic. There was very little production and financial accountability.

In the early 1980’s the program grew a bit, using volunteer labor from the Comprehensive Employment and Training Act under the US Department of Labor. Only temporary measures were installed with no diagnostic technology.

In 1991 the Weatherization Program was evaluated and become clear that the cost-effectiveness of the installed materials must be tracked. Measures expanded to shell work and heating and cooling systems. The program began allowing paid labor, while Training & Technical Assistance (T&TA) addressed the programs short coming. Diagnostic tests started being utilized such as the blower door, as well as state evaluations conducted.

From 1990 to the present date, testing and diagnostics have been refined and are effective. Installations are conducted by highly trained crews. All measures installed are permanent and cost effective. The present has been increased with the use of advanced diagnostic tools and energy audit software.

COUNTIES	# JOBS	TOTAL DOLLARS
BRECKINRIDGE	5	\$50,731.47
GRAYSON	4	\$59,431.89
HARDIN	6	\$6,080.35
LARUE	1	\$11,446.70
MARION	2	\$25,285.18
MEADE	1	\$30,652.81
NELSON	0	\$228.54
WASHINGTON	1	\$8,239.51
	16	\$209,629.82



**\*Deferred Dwellings** are those which require work outside of the allowable cost set forth by the US Department of Energy and were referred to other resources and/or programs. Once deficiencies of the dwelling are resolved, the dwelling will become eligible for weatherization services.

The weatherization staff of Central Kentucky Community Action strive to assure the highest level of testing for the health and safety of the clients we serve. Through the health and safety testing process, the testing consist of energy system diagnostics, monitor ambient carbon monoxide levels, checking for any electrical hazards, containments such as mold and moisture issues, assure that all vented appliances (gas fired water heaters, furnaces, cloth dryers, bath and kitchen exhaust fans) are properly vented to the exterior of the home, and installing smoke and carbon monoxide detectors in the dwelling. The WAP program also allows repairs to the primary heating source to assure all defective equipment is working properly within the cost guidelines of the weatherization program.

Energy saving measures taken to reduce energy usage are: testing for air leakage of the home, checking existing insulation levels of the attic, floor, and walls. WAP program also tests the base load consumption of the dwelling such as kilowatt usage of the dwelling. All information gathered on each dwelling is run through a computerized software program called NEAT/MHEA to determine what measure will be installed and performed to the dwelling. All Energy Conservation Measures (ECM) must carry a Saving to Investment Ratio (SIR) of 1 or greater for the ECM measures to be installed by the Weatherization program. The SIR is determined by the NEAT/MHEA software. With the use of the software to target energy saving measures, the weatherization program on average reduces energy consumption by 35% (being a national average) based on studies conducted by the United States Department of Energy.

The Weatherization Program provides weatherization services to our 8-county area. Our final numbers for the contract year are as followed; 16 completed units, 7 jobs in-progress to carry over into the new contract year. The Weatherization Program is fully staffed with an in-house crew, and we are utilizing contractors to perform Quality Control Inspector (QCI) inspections, HVAC and electrical work that we must perform to the dwellings receiving services. We look forward to the future of the new contract year of CKCAC's Weatherization Program to progress and better serve our 8-county service area. With the Bipartisan Infrastructure Law (BIL) funding we have been allocated funding to purchase new vehicles and equipment with the opportunity to offer services to qualifying multi-family projects/units throughout our 8-county service area.

Central Kentucky Community Action Council WAP program is fully staffed with a highly trained supporting and technical staff consisting of: Josh Mattingly-Dwelling Needs Evaluator/Crew Leader; Tessa Hinton-Crew Leader; Mike Burden-Retrofit Installer, and Samantha Ross-Weatherization Administrative Support Specialist. We would like to say a huge thank you to all our WAP staff for their dedication for improving the quality of work and the dedication to ensure the health and safety of all the clients we serve.

Central Kentucky Community Action Council has leveraged funds from utilities to expand the reach of the Weatherization Assistance Program. This year we are leveraging funding from Department Of Energy (DOE), DOE BIL, Low-Income Home Energy Assistance Program (LIHEAP), East Kentucky Power, Kentucky Utilities, and Louisville Gas & Electric.

Our goal with weatherization is to continue to reduce energy waste and assure the health and safety of each client we serve through testing consisting of; aliening air and thermal boundaries, pressure diagnostics, heating system diagnostics, and base load energy consumption diagnostics.

### **Weatherization Success Story:**

Our client described significant struggles, explaining, "I can only keep one room in my house warm or cool enough to stay in, and my electric bills sometimes reaches nearly \$500. I only have \$700 a month to live on." CKCAC's auditing staff visited to conduct an energy audit. Upon learning about the process, the client, moved to tears, shared, "I've never asked for help in my life. I'm so grateful there are programs like this to help people in need."

During the audit, our team discovered critical issues: only one of eight supply ducts was attached, and exposed, live wires in the crawlspace created severe fire hazards. The auditor addressed these concerns, turned off unsafe wiring, and initiated health and safety measures.

Six weeks later, CKCAC received a thank-you note from the client: "My electric bill is down to \$98, the lowest it's been in five years." Through insulation, duct sealing, air infiltration reduction, and LED lighting, CKCAC not only reduced energy costs but helped this client find comfort and renewed hope.

# LIHEAP

SUMMER COOLING SUBSIDY (JULY-SEPTEMBER)

1,612 FAMILIES  
\$519,800 AWARDED

SUMMER COOLING CRISIS (JULY-SEPTEMBER)

639 FAMILIES  
\$136,368 AWARDED

FALL SUBSIDY (NOVEMBER-DECEMBER)

3,281 FAMILIES  
\$416,371 AWARDED

CRISIS (JANUARY-APRIL)

4,242 FAMILIES  
\$953,248 AWARDED

SPRING SUBSIDY (MAY-JUNE)

2,032 FAMILIES  
\$280,811 AWARDED

# COMMUNITY SERVICES

The Community Services Block Grant (CSBG) program continues to act as a vital resource for the community. Initially set up as an immediate emergency assistance provider, CSBG has grown into a comprehensive program that empowers low-income families to reshape their lives.

While our commitment to providing emergency assistance remains strong, our services have expanded to include more supportive features. We assist families with budgeting, help them formulate goal-driven plans, and strategize to avert future emergencies. Practical advice on budget billing, prioritizing rent payments, shopping at less expensive stores, and managing impulsive spending is also offered as part of our program.

For those currently unemployed, we actively encourage them to seek work. Our employment and education programs are designed to help individuals overcome minor barriers that could be preventing them from securing full-time or improved employment. Our assistance can range from partial support for Community Needs Assessment or Commercial Driver's License (CDL) classes, to providing suitable clothing and shoes for a new job, and even offering gas for transportation to work for the initial week.

Moreover, we have integrated the Garden Program into our initiatives. This program encourages community members to engage in gardening, fostering self-sufficiency and promoting a healthier lifestyle. By growing their own food, families can reduce their grocery bills and have access to fresh, nutritious produce. This innovative program is yet another way we are working to uplift and empower our community members.

## COMMUNITY ACTION BLOCK GRANT SUCCESS STORIES:

One client came in shortly after starting back to work stating she needed help catching up on her bills. After looking at her budget, we were able to give her funds to assist her with rent. When asked how this assistance helped her she said, "Being able to get that paid at that time kept me from getting further behind and that was exceptionally helpful."

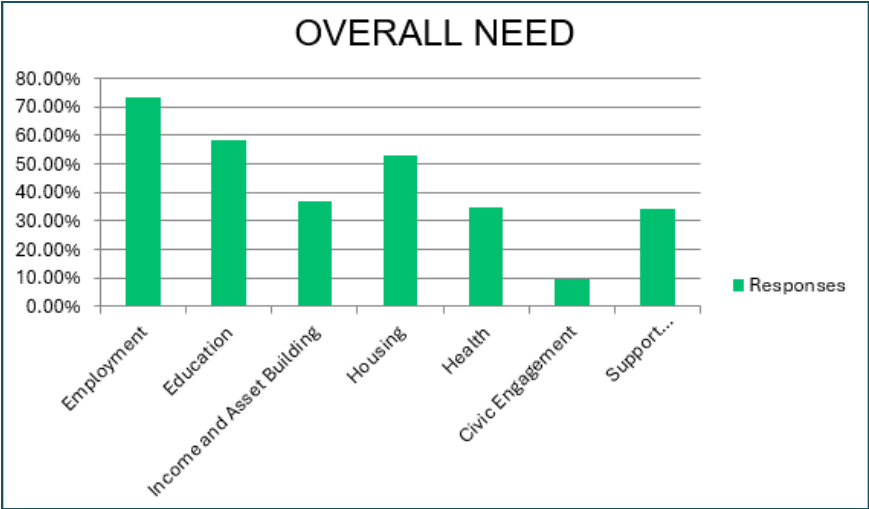
Another client reached out for assistance after four years. She works full-time and had just found a place for her and her two children to live. She had money to cover a deposit but was struggling paying the first month's rent. The Community Foundation Grant was able to help pay \$400 of her rent and she was able to pay the other half herself. CSBG informed the client of an upcoming opportunity to apply for LIHEAP that would give her a utility credit on her bill and also was able to provide her and her family with pool passes. The client expressed extreme gratitude at the opportunity to take her family to the pool. This client has progressed so much since her initial visit. We are hopeful that she will climb above and out of her current state of poverty.



<b>18,696</b> FOOD BOXES WERE DISTRIBUTED	<b>195</b> UNEMPLOYED ADULTS OBTAINED/RETRAINED EMPLOYMENT FOR AT LEAST 90 DAYS	<b>6,248</b> UNDUPLICATED HOUSEHOLDS SERVED
<b>176</b> HOUSEHOLDS AVOIDED EVICTION	<b>\$2.4 MILLION</b> IN ASSISTANCE WAS USED TO OFFSET UTILITY COSTS FOR STRUGGLING FAMILIES	<b>80</b> CHILDREN BENEFITED FROM YOUTH ENRICHMENT ACTIVITIES
<b>168</b> COMMUNITY/INDIVIDUAL GARDEN PROJECTS WERE FUNDED	<b>407</b> FAMILIES MAINTAINED SAFE, AFFORDABLE HOUSING FOR 90 DAYS	<b>333</b> CHILDREN PARTICIPATED IN OUR BACKPACK SNACK PROGRAM

### Community Needs Assessment

Central Kentucky Community Action’s annual community-wide needs assessment provides our team with input from local residents to help us better gauge the needs of the community going forward. Based on this year’s survey, the top five areas of need are Employment, Education, Housing, Income/Asset Building and Health. The chart indicates the percentages for each. This information will enable us to cater our programs to better suit the community needs in the new fiscal year.





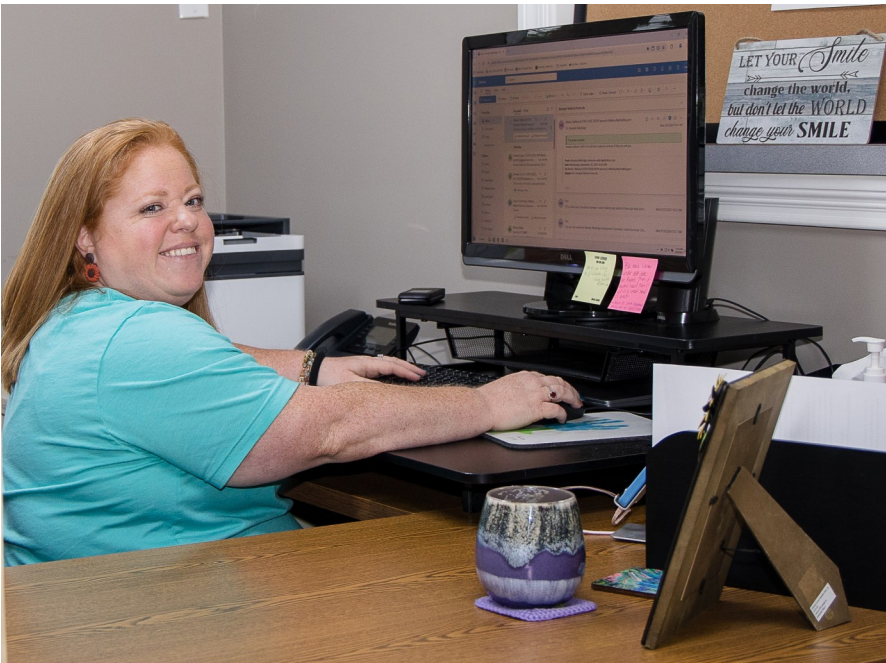
# EMPLOYMENT

## Kentucky Works Program

The Kentucky Works Program supports the Kentucky Transitional Assistance Program (K-TAP) and Supplemental Nutrition Assistance Program (SNAP) in the following Kentucky counties: Anderson, Breckinridge, Bullitt, Franklin, Grayson, Hardin, Henry, LaRue, Marion, Meade, Nelson, Oldham, Shelby, Spencer, Trimble, Washington, and Woodford. Our goal is to assess these individuals to identify barriers and work to overcome those barriers to make them self-sufficient. Kentucky Works also has job readiness classes to help with resumes, job search, job interviews, etc.

During this fiscal year, we received 308 referrals for the KTAP program. This is a 31% increase from the last fiscal year. We placed 109 of these clients in work preparation activities with the majority of these doing volunteer hours to gain needed work experience. This was more than double the last fiscal year which saw 54 placed in work preparation activities. Our Employment Specialists continue to follow up with these clients and track their hours to make sure they are successful. After helping our clients overcome barriers, we were able to place 183 in unsubsidized job placement which helped put them on the way to self-sufficiency. This number was up from 86 in the last fiscal year.

Regarding the SNAP Employment and Training Program we continue to reach out to these clients and complete assessments when they are referred to us. Kentucky Works had 2,559 referrals for the SNAP program during the last fiscal year. This is more than double the 1,259 referrals we had for the last fiscal year. We provided outreach to 2,850 clients during this fiscal year. With the covid exemptions now behind us we were also able to place 16 participants in employment and 24 in work preparation activities.



Kentucky Works continually works with employers in our area to make sure we have the right job opportunities for our clients when they are ready to make that move and keep a current job listing in each of the counties we serve. We also work with our non-profit agencies in each of our counties to make sure we have an adequate number of job sites that are willing to take our clients to give them work experience to help them become self-sufficient.

Kentucky Works continues to offer a wage subsidy program where the employer will be reimbursed for a portion of their wages during their first six months of employment if they hire one of our KTAP clients.

## Success of Kentucky Works

# TRANSPORTATION

## Client Satisfaction

Community Action Transportation Services provides many services for its communities. It is important to interact and speak with clients to make sure that the services that we provide are needed and to see if there are ways that we can improve these services.

CKCATS conducts a public hearing annually to identify unmet public transportation needs in the region. Prior to the public hearing, CKCATS sends out surveys to clients and stakeholders to get a review on how well services are being met. These surveys are shared at the public hearing and are used to complete our Coordination Plan each year. Our public hearings are usually held in February or March and a Public Meeting Notice is advertised in each county a month before the meeting. We welcome anyone who is interested in public transportation to attend!

## Intercity Transportation

CKCATS offers public transportation services to get you to and from bus depots or airports in Kentucky from any of our five-county area offices, including Breckinridge, Grayson, LaRue, Marion, and Nelson counties for a low price of \$10 per person for a one-way trip. Our best advertisement for this service is through word of mouth. Since last fiscal year, our Intercity trips have increased by 312 trips! This is an incredible service for those who love to travel! We are excited to be able to offer this service and have hopes to see this service continue to grow. Call our staff at 1-800-242-8225 or 270-692-9313 to schedule your Intercity trip today!



CKCATS Central Office Staff here to assist you with your trips.

Chrysler Voyager vans purchased in 2024 for CATS to transport our clients.



Marion County Judge Executive, David Daugherty and his family used CATS Intercity services for a family trip this year. "Everything was perfect" was how they described their experience with the service.



CATS Annual Training with Hal B. Goode and Mary Jane Tungate updating them on new policies and procedures.

# CKCATS STAFF WIN AWARDS

## Driver Appreciation

Recognizing and appreciating employees is essential for boosting morale and acknowledging the hard work that they put into their roles. At the Annual training for CATS, the Transportation Director, Kerri Taylor, implemented a section of the training to give out awards to the CATS staff. The drivers, office staff, and management are all able to vote for any employee in CATS for these awards.

2023-2024 winners who received a medal plaque were:

**Outstanding Driver Award** - Amanda Floyd & Melissa Tonge

**Customer Service Representative of the Year** - Lori Tungate

**Employee of the Year** - Daryl Hardin

These winners all received a paper certificate along with a \$10 gift card to Five Star (donated by Newcomb Oil).

**Rising Star Award** - Shacoya Edwards & Judy Metcalf

**Engagement Award** - (one was given in each county)

Marion County - Crystal Boling

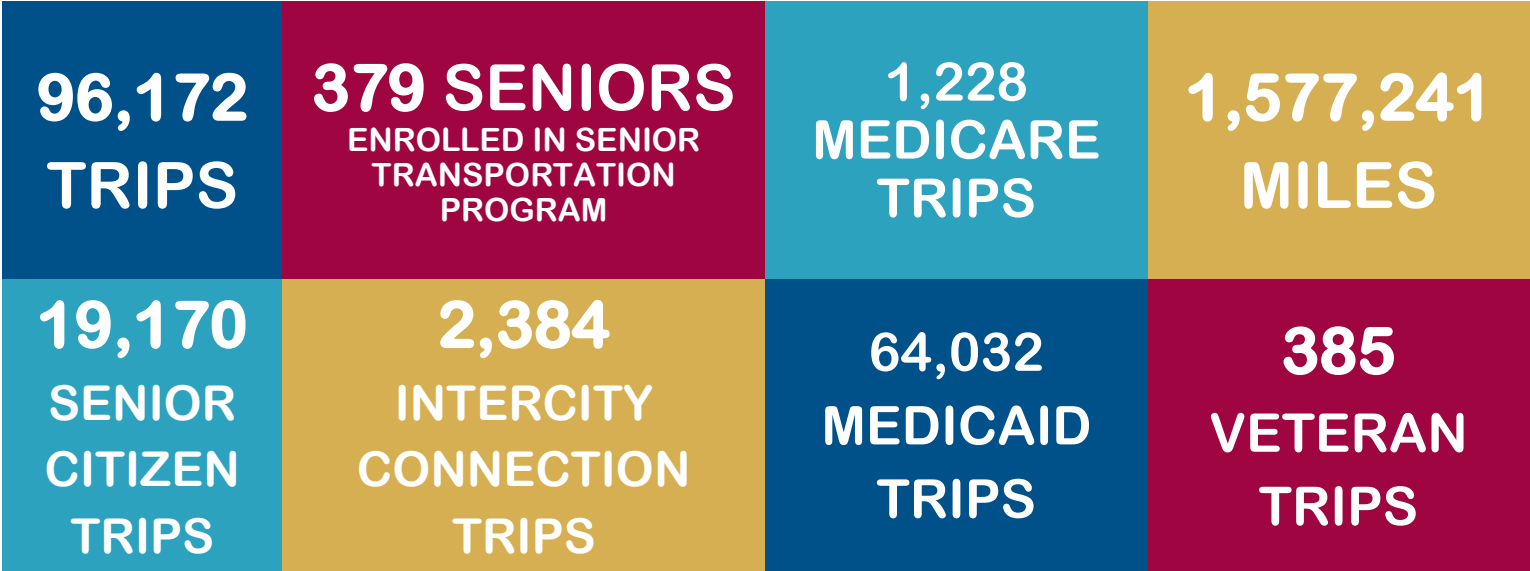
Nelson County - Miranda Wild

LaRue County - Keith Strand

Breckinridge County - Mike Schickinger

Grayson County - Amanda Floyd

All employees are recognized by receiving a certificate displaying their years of service and dedication to CATS.





# SENIOR SUPPORT

## Senior Companion Program-Volunteers

The Senior Companion Program is a program that supports our senior community in two different ways. Our volunteers are seniors aged 55 and older who are no longer in the workforce and are living on a fixed income and considered low income. The tax-free stipend that they receive allows them to serve frail elderly members of our communities while earning some extra money to stretch their fixed income. This stipend is NOT considered as income when applying for other government benefits such as SNAP or housing assistance. Seniors who need assistance or companionship do not have to qualify; they must simply present a need.

The program currently serves the counties of Breckinridge, Grayson, Hardin, Marion, Nelson, and Washington. There are currently 26 active volunteers. These volunteers served over 23,000 hours in their communities during the 2023- 2024 fiscal year.



## Retired & Senior Volunteer Program

AmeriCorps Seniors - Retired and Senior Volunteer Program (RSVP) enriches the lives of men and women, age 55 and over, through meaningful volunteer opportunities that use their time and skills to address critical community needs in Hardin and Nelson County. Retired and Senior Volunteer Program (RSVP) is a national volunteer program funded by the Corporation for National and Community Service. Volunteers choose how, where, and how often they want to serve, with commitments ranging from a few hours to 40 hours per week.

Seniors have a lifetime of experience to share, and the desire to make a real difference in their community. They have managed households, businesses, and held roles as medical personnel, farmers, artists, teachers, executives, and engineers to name a few. Now, they are ready to put their unique talents and expertise to work in their communities while enriching their own lives.

Our dedicated 103 RSVP volunteers donated 26,743 hours from July 1, 2023 - June 30, 2024 and 85% of Retired and Senior Volunteer Program (RSVP) volunteers report that their service has improved their knowledge, health, or social connectedness.

# Congregate Meals Program

## Continues to Serve In-Person and Drive-Thru Meals

The Congregate Meal Program provides free, hot nutritious meals Monday through Friday in eleven senior centers located in the Lincoln Trail area for seniors who are age 60 or older. A 24 - hour notice is required to reserve a meal. The total meals and unduplicated clients served is below. We served 92,013 meals to 1,295 clients from July 1,2023 - June 30, 2024.

November 8, 2023, we opened the Meade County Senior Center and started serving meals inside. The Meade County voucher program ended in June 2024.

We are serving around 450 client’s hot meals daily out of our two kitchens in Nelson and Grayson. We did add a new position to our staff this year. We now have an Assistant Director for the Congregate Meals Director which has really helped, since we do continue to grow with clients. The Seniors enjoy coming to the center, visiting with their friends, playing bingo, cards, doing crafts, and working puzzles.

Below is a breakdown of how many meals were served and how many vouchers were given to clients:



CENTERS	MEALS	CLIENTS
Bardstown	19,771	351
Bradfordsville	552	17
Breckinridge	4,951	49
Grayson	6,160	82
Griffin Manor	6,877	86
LaRue	6,795	132
Lebanon	20,399	193
Meade	7,405	212
New Haven	755	10
Radcliff	6,646	61
Washington	11,702	102
CENTER	VOUCHERS	CLIENTS
Meade	2,035	92

# OFFICE LOCATIONS

## CENTRAL KENTUCKY COMMUNITY ACTION TRANSPORTATION SERVICES (CKCATS) LOCATIONS\*

### BRECKINRIDGE COUNTY\*

189 Ball Park Road  
Hardinsburg, KY 40143  
(800) 242-8225 / (270) 692-9313

### GRAYSON COUNTY\*

102 B Watkins Woods Drive  
Leitchfield, KY 42754  
(800) 242-8225 / (270) 692-9313

### LARUE COUNTY\*

138 Phillips Lane  
Hodgenville, KY 42748  
(800) 242-8225 / (270) 692-9313

### MARION COUNTY\*

328 Hood Avenue / PO Box 830  
Lebanon, KY 40033  
(800) 242-8225 / (270) 692-9313

### NELSON COUNTY\*

122 Plaza Drive  
Bardstown, KY 40004  
(800) 242-8225 / (270) 692-9313

\*Limited Services in Hardin, Meade & Washington Counties

\*Medicaid, Medicare, General Public & Intercity Transportation

## CENTRAL OFFICE MARION COUNTY

Administration / Community Services Block Grant /  
Congregate Meals / Family Child Care Homes &  
Unaffiliated Centers / Head Start / Senior  
Companion / Weatherization  
332 Hood Avenue / PO Box 830  
Lebanon, KY 40033  
(270) 692-2136

## COMMUNITY COLLABORATION FOR CHILDREN (CCC)\* LOCATIONS

### NELSON COUNTY

830 Pennsylvania Avenue  
Bardstown, KY 40004  
(270) 692-7553  
\*Also serves Breckinridge, Grayson, Hardin,  
LaRue, Marion, Meade & Washington Counties

## COMMUNITY SERVICES BLOCK GRANT (CSBG) LOCATIONS

### BRECKINRIDGE COUNTY

189 Ball Park Road  
Hardinsburg, KY 40143  
(270) 756-6813

### GRAYSON COUNTY

118 William Thomason Byway  
Leitchfield, KY 42754  
(270) 259-3500

### HARDIN COUNTY

233 Ring Road, Suite 100  
Elizabethtown, KY 42701  
(502) 764-2220

### LARUE COUNTY

138 Phillips Lane  
Hodgenville, KY 42748  
(270) 358-3937

### MARION COUNTY

340 Hood Avenue / PO Box 830  
Lebanon, KY 40033  
(270) 692-6411

### MEADE COUNTY

496 East Broadway  
Brandenburg, KY 40108  
(270) 422-2545

### NELSON COUNTY

830 Pennsylvania Avenue  
Bardstown, KY 40004  
(502) 348-9596

### WASHINGTON COUNTY

394 Lincoln Drive, Suite 2  
Springfield, KY 40069  
(859) 336-7766

## CONGREGATE MEALS / SENIOR CENTERS

### BRECKINRIDGE COUNTY

205 Fairgrounds Road  
Hardinsburg, KY 40143  
(270) 756-5668

### GRAYSON COUNTY

102 B Watkins Woods Drive  
Leitchfield, KY 42754  
(270) 259-4885

### HARDIN COUNTY

1119 Johnstown Road  
Elizabethtown, KY 42701  
(270) 982-2909

230 Freedom's Way  
Radcliff, KY 40160  
(270) 351-4079

### LARUE COUNTY

112 North Walters Avenue  
Hodgenville, KY 42748  
(270) 358-4235

### MARION COUNTY

100 West Mulberry Street  
Lebanon, KY 40033  
(270) 692-6591

115 South 6th Street  
Bradfordsville, KY 40009  
(270) 692-6591

### MEADE COUNTY

1200 Old Ekron Road/PO Box 1006  
Brandenburg, KY 40108  
(270) 998-1041



## **NELSON COUNTY**

122 Plaza Drive, Suite A  
Bardstown, KY 40004  
(502) 348-1888

## **WASHINGTON COUNTY**

206 Main Cross Street  
Springfield, KY 40069  
(859) 336-0909

## **HEAD START LOCATIONS**

### **HARDIN COUNTY**

**Elizabethtown Head Start**  
401 West Poplar Street  
Elizabethtown, KY 42701  
(270) 900-4831

### **Radcliff Head Start**

788 South Wilson Road  
Radcliff, KY 40160  
(270) 390-4202

### **LARUE COUNTY**

**LaRue County Head Start**  
407 Miami Court  
Hodgenville, KY 42748  
(270) 358-3335

### **MARION COUNTY**

**Lebanon Head Start & Early Head Start**  
1081 Corporate Drive  
Lebanon, KY 40033  
(270) 692-4291

### **West Main Head Start**

356 West Main Street  
Lebanon, KY 40033  
(270) 692-9966

### **MEADE COUNTY**

**Meade County Head Start & Early Head Start**  
6215 Brandenburg Road  
Ekron, KY 40117  
(270) 828-4417

## **NELSON COUNTY**

### **Bardstown Head Start**

820 Pennsylvania Avenue  
Bardstown, KY 40004  
(502) 348-9240

### **Family Enrichment Center**

830 Pennsylvania Avenue  
Bardstown, KY 40004  
502-331-0055

### **New Haven Head Start**

413 North First Street  
New Haven, KY 40051  
(502) 549-3786

## **WASHINGTON COUNTY**

### **Springfield Head Start & Early Head Start**

394 Lincoln Drive, Suite 1  
Springfield, KY 40069  
(859) 481-6166

## **KENTUCKY WORKS\***

### **BRECKINRIDGE COUNTY**

#### **Kentucky Works\***

189 Ball Park Road  
Hardinsburg, KY 40143  
(270) 580-4160

\*Also serves Grayson & Meade Counties

### **FRANKLIN COUNTY**

#### **Kentucky Works\***

73C Michael Davenport Blvd. #1  
Frankfort, KY 40601  
(502) 803-3133

\*Also serves Anderson & Woodford Counties

### **HARDIN COUNTY**

#### **Kentucky Works**

950 Mulberry, Suite 260  
Elizabethtown, KY 42701  
(270) 769-0908

### **LARUE COUNTY**

#### **Kentucky Works\***

138 Phillips Lane  
Hodgenville, KY 42748  
(270) 692-7044

\*Also serves Bullitt County

## **NELSON COUNTY**

### **Kentucky Works\***

830 Pennsylvania Avenue  
Bardstown, KY 40004  
(502) 331-3275

\*Also serves Marion, Spencer & Washington Counties

## **SHELBY COUNTY**

### **Kentucky Works\***

229 Alpine Drive  
Shelbyville, KY 40065  
(502) 633-1199

\*Also serves Henry, Oldham & Trimble Counties

## **RETIRED SENIORS VOLUNTEER PROGRAM (RSVP) LOCATION\***

### **HARDIN COUNTY**

**(Located in Griffin Manor)**

1119 Johnstown Road\*  
Elizabethtown, KY 42701  
(270) 737-1059

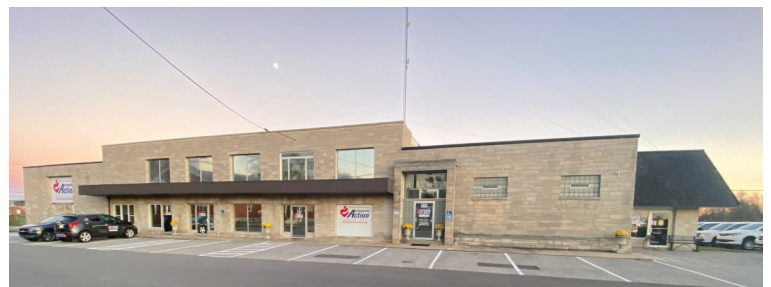
\*Also serves Nelson County

## **WEATHERIZATION LOCATION\***

### **GRAYSON COUNTY**

118 William Thomason Byway  
Leitchfield, KY 42754  
(270) 259-0021

\*Also serves Breckinridge, Hardin, LaRue, Marion, Meade, Nelson & Washington Counties



Pictured: Central Kentucky Community Action Council's Central Office located in Marion County.



Thank You to Our Sponsor for  
your support over the years

